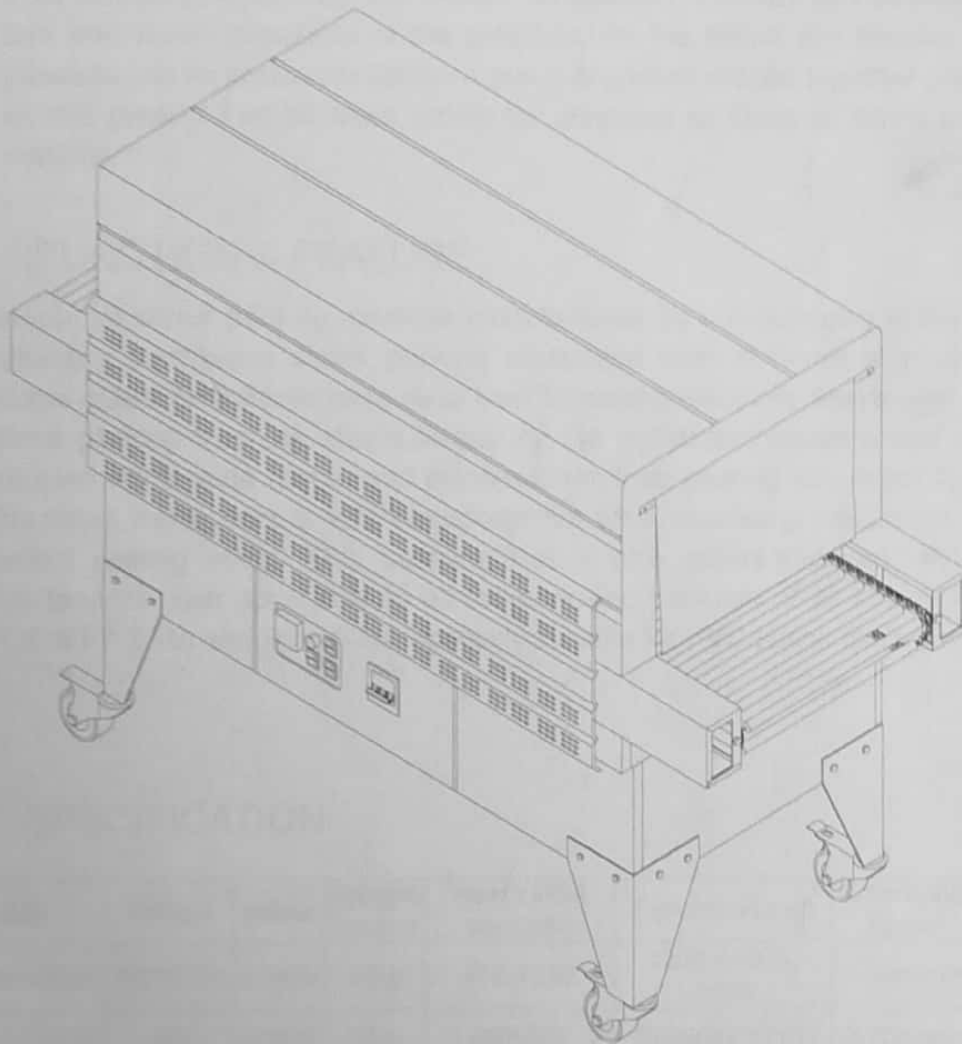


12/10/11

SHRINK PACKING MACHINE

E-TUN4525H/E-TUN4535H

OPERATION MANUAL



I .USE:

Shrink packing machine is one of the advanced packaging ways in the international market at present. It adopts shrink film to products or being packed articles, and then to heat the shrink packing material & tightening products or being packed articles, so that the appearance of the articles is shown fully, so that the articles can be put well on display and which may also increase the their beauty and value. Besides, the packed articles can be sealed, damp proof, dustproof and protect themselves from outside shock and thus have the better functions. Especially for packing glassware, this can prevent household utensils from scattering when they are broken. In addition, this way can decrease the torn and stolen possibility of the products. As the shrink film shrinks, some pressure can be created to tighten a group of packed articles together and trays so this product can be used widely for shrinking all kinds of shrink packing material

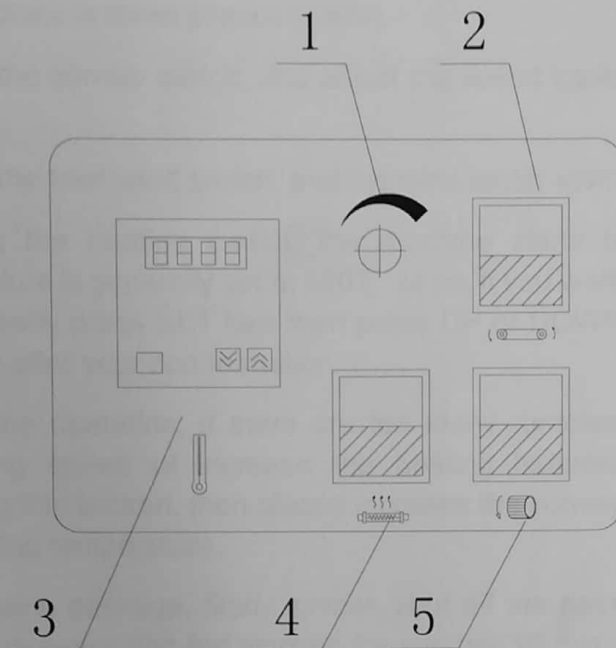
II .FUNCTION & FEATURE:

Normal jet shrink packing machine manufactured by our company is the latest automatic continuous shrink packing equipment both at home at present. It adopts quartz far-infrared capsule to heat for saving electricity (save over 15%). Shrink packing machine adopts frequency con troll motor, whose speed can be adjusted within wide range, and the maximum load bearing can reach to 10kg. The stove inside adopts fully closedown hot wind circulating equipment to get perfect sealing effect. This machine has a nice appearance an with easy maintenance, can applicable to all the shrinking package of all kinds of PVC, POF & PP ETC. shrinking films, specially suitable for PVC shrink film's packing.

III SPECIFICATION

Model	Voltage	power	Weight loading	Heat tunnel size(mm)	Dimension(mm)	Conveying Speed	Weight
E-TUN-4525H	220V/380	6.5KW	10kg	450×250	1200×700×1000	0-10m/min	91kg
E-TUN-4535H	380	9.6KW	30kg	450x350	1600×700×1100	0-10m/min	120kg

IV CONTROL PANEL:



- 1. Speed Adjust 2. Convey switch 3. Temperature controller
- 4. Heat switch 5. Heat wind switch

V TEMPERATURE & TIME FOR SHRINK FILM:

Term Film	Name	Thickness(mm)	Heating(S)	Shrinking room temperature(°C)
Polyvinyl chloride	PVC	0.01-0.06	5-10	160-180
Polypropylene	PP	0.01-0.04	10-20	180-200
Polyolefin	POF	0.01-0.03	10-20	180-200

VI OPERATION PROCEDURES & NOTICE:

1. This machine is three phases (380V),
2. Closing the convey switch, and adjust the speed knob to the medium of slow speed.
3. Closing the heat wind switch, and the wind motor start to work.
4. Pressing the heating switch, the machine starts to heat. The shrinking temperature is generally set at 180°C or so, if you want to set the temperature, please firstly press SET key, then press UP or DOWN key, and at last press SET key after your con formation.
5. During the operation, if there are too many rumples, please decrease the conveying speed of increase the heating temperature Whereas, if the shrinking film broken, then please increase the conveying speed of decrease the heating temperature.
6. After rinsing package, firstly, please shut off the heating switch, and let the conveying motor and fan working for another 10 minutes of so, then shut off the other power switch, master heating switch and master controlling switch.
7. The diameter of the inputting wire for this machine should be more than 3mm², and do not put your hand into the machine in case there's an electric shock.
8. The machine should be put flatly at the ground, or the mesh-belt would be aberrant; after three months using, please check the aging of the electricity wire, and exchange it if it's necessary.

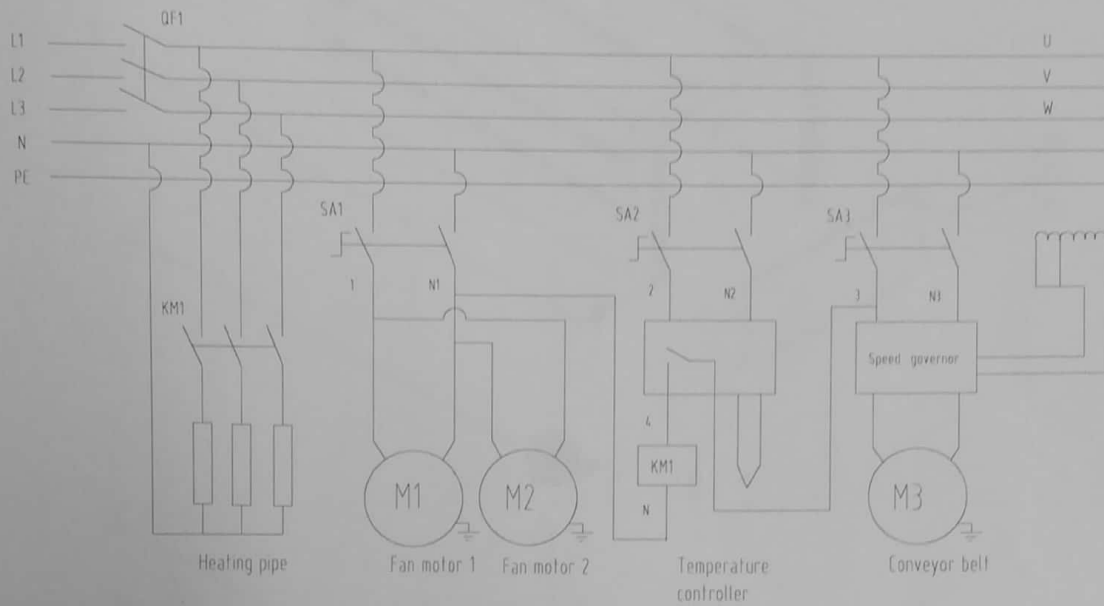
VII MALFUNCTION & TROUBLESHOOTING:

If there's a malfunction, firstly please have a check whether the inputting voltage is normal and also it is in the right wire connection.

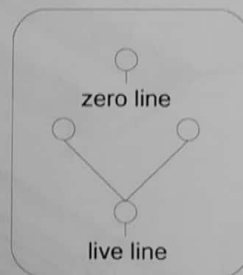
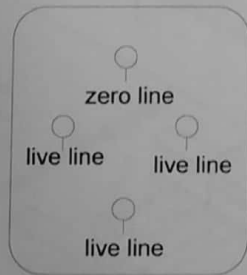
1. There's no heating phenomenon in the shrinking tunnel.
 - a. Check input power is all right, whether there is any lack of phase.
 - b. The temperature regulator has seized up: maintain or exchange it.
 - c. AC contactor has been damaged: exchange it.
 - d. The wire connectors have been aging and lead to turnoff: reconnecting them.
 - e. The heating tube has been damaged: exchange it.
2. The conveying motor doesn't work:
 - a. Check whether the chain is too tight, loosening the tighten bolts at two ends.
 - b. The motor switch has seized up: exchange it.
 - c. Speed regulator has been burnt due to high temperature: exchange it .
3. Hot wind motor doesn't work:
 - a. The fan has been damaged: exchange it.
 - b. Hot wind switch has been damaged: exchange it.
 - c. The fan leaf has been blocked: reset the machine after solving this problem.

VIII .ELECTRICDIAGRAM:

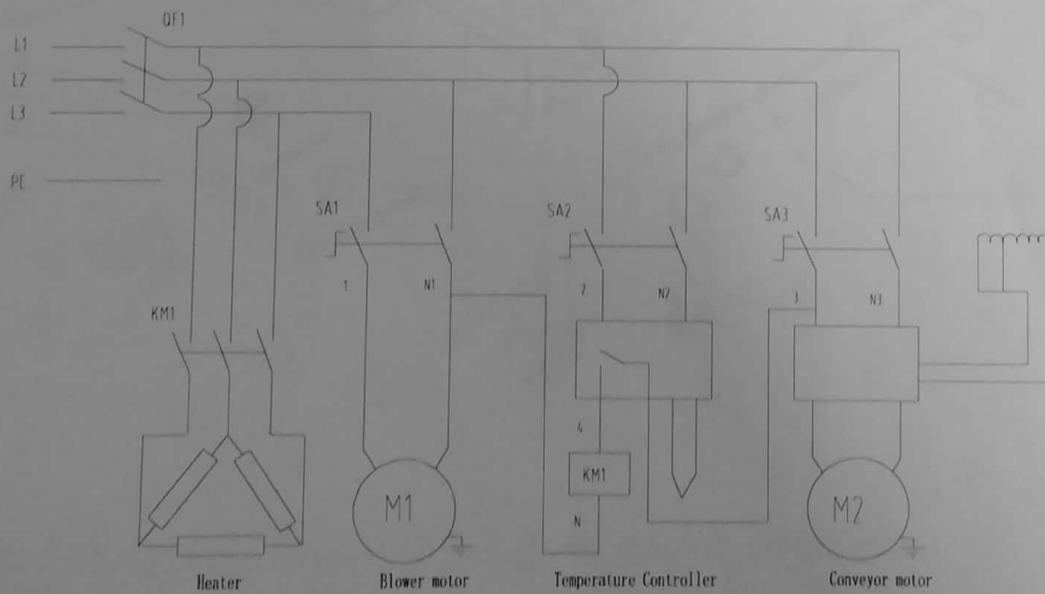
3 phase 380V 50/60HZ

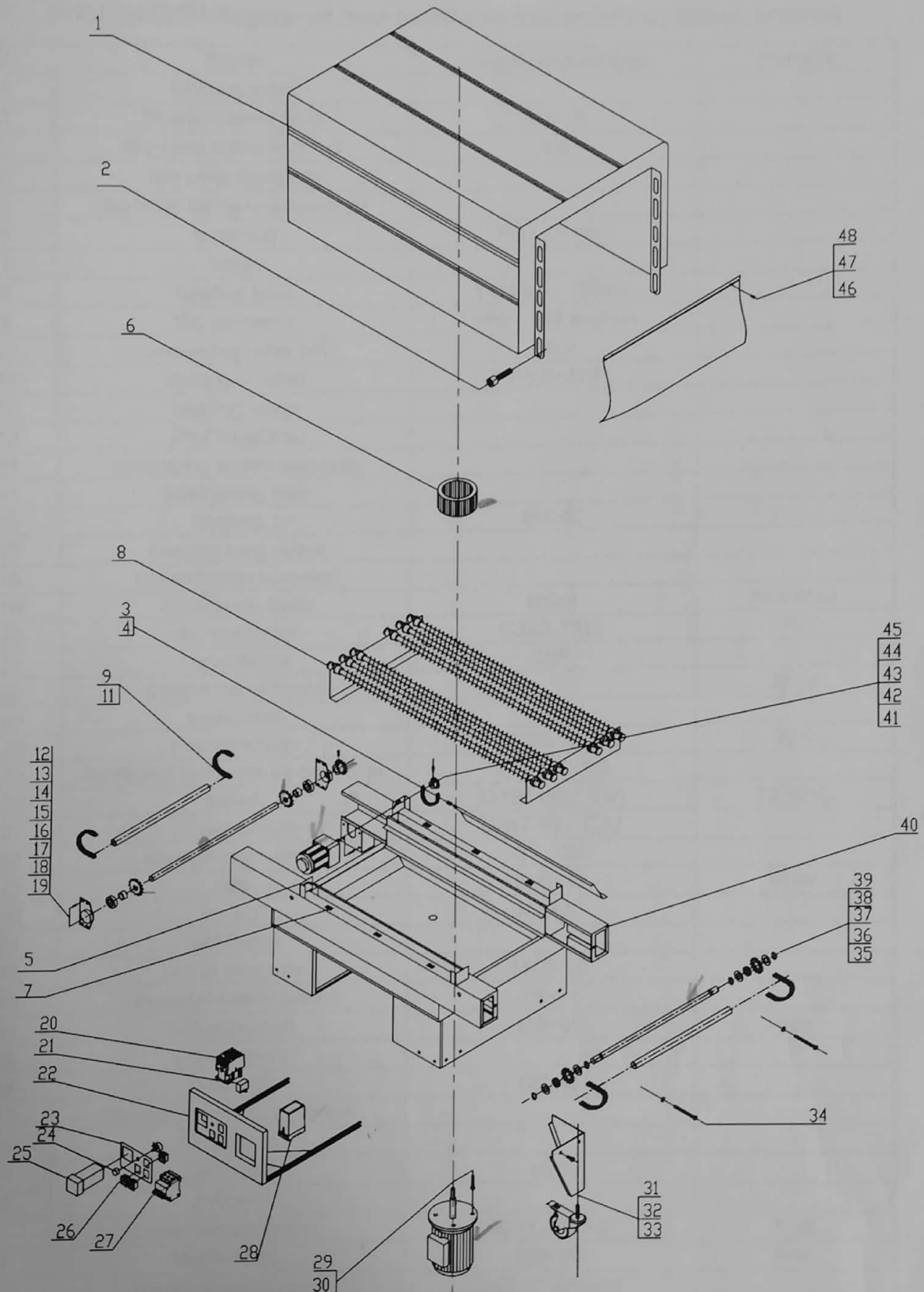


Three phases (380V) Single phase (220V):



3 phase 220V 50/60HZ

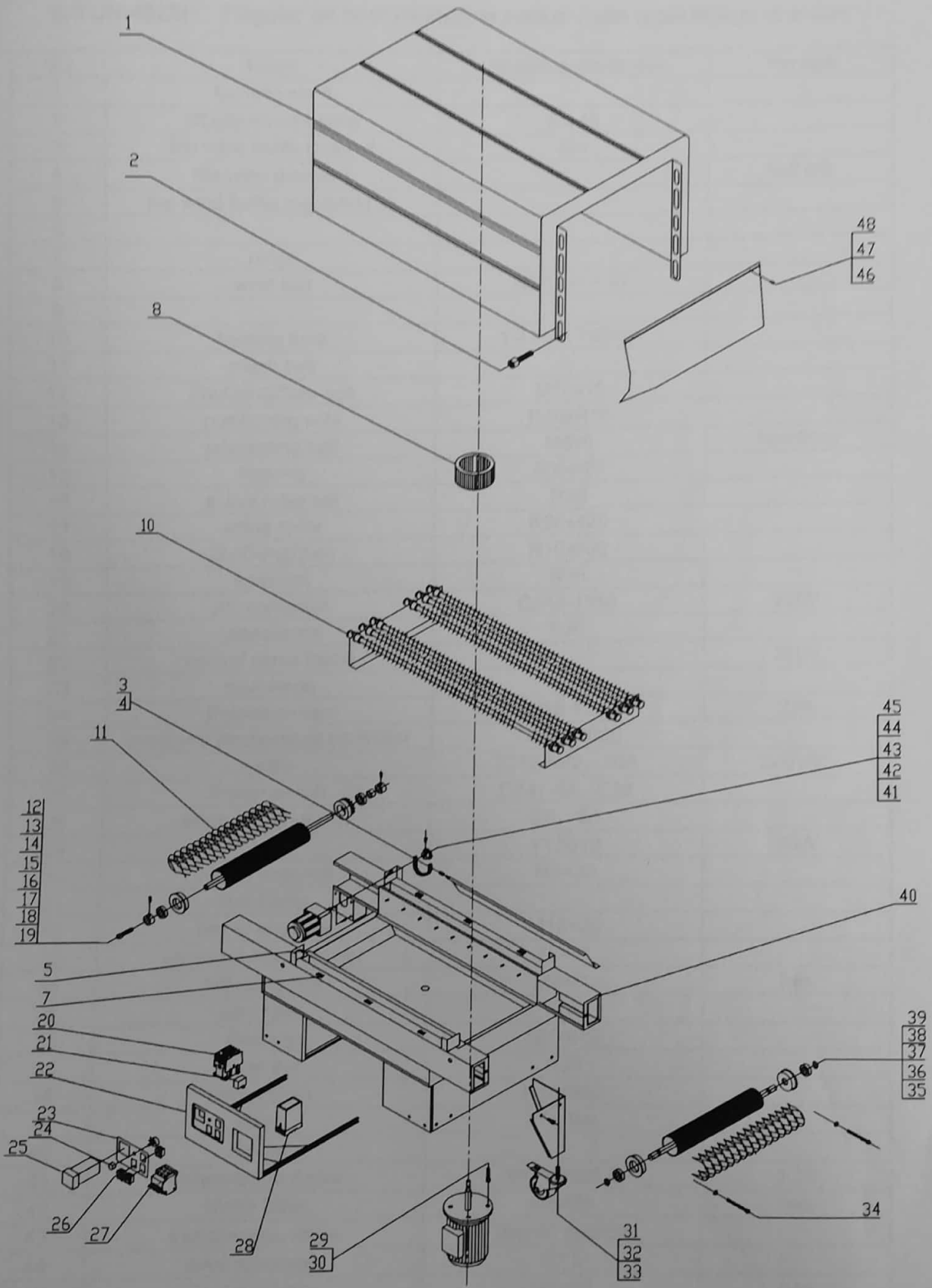




Jet shrinker decomposition graph (chain) E-TUN-4525H

E-TUN-4525H Regular jet heat shrinkable packer (chain) fittings directory

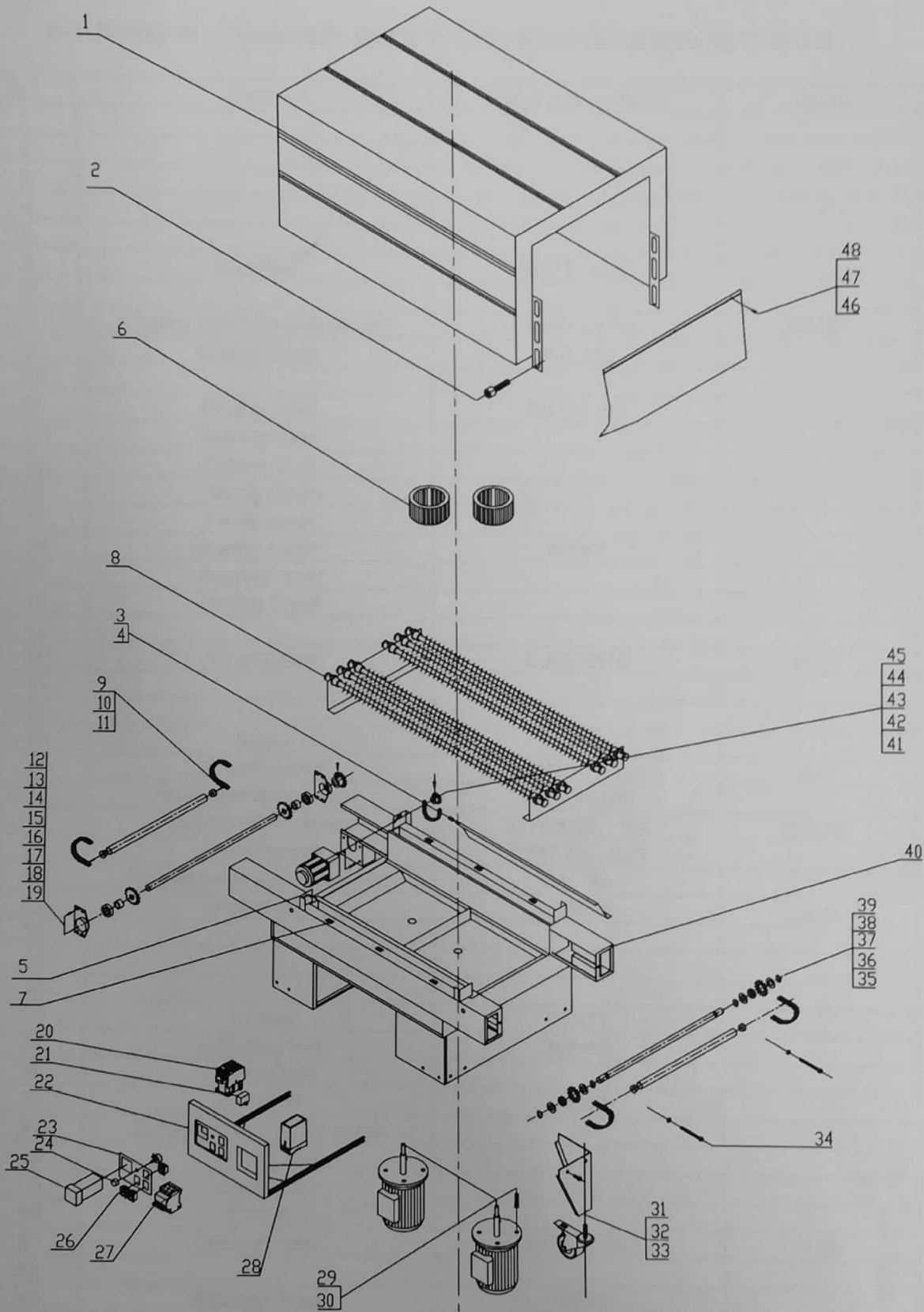
NO	Name	Spedificanon/Model	Remark
1	furnace word		
2	lift adjustment bolts	6 x 16	
3	the wind baffle lock nut	M4	
4	the wind dampers		
5	the wind baffle regulating sit		
6	wind leaf	R67.5 H=67	
7	hinge		
8	heating tube	1.2 KW x 755mm	
9	the conveyor	08B - 252 section	
10	conveying roller set	R8.5	
11	conveyor roller	R8.5×393	
12	bearing cover		
13	ZhuDongZhou		
14	conveying active sprocket		
15	positioning sets		
16	bearing 1	6004Z	
17	bearing tong cover		
18	transmission sprocket		
19	Positioning bolts	M6x8	headless
20	AC contactor	CJX2-1810	220V
21	capacitance	5uF	
22	control panel frame		220V
23	scutcheon		
24	Potentiometer	WH118-1, 2W	22K
25	intelligent temperature controller	XMTG-2000	
26	switch	321B/N82, 16A	220VAC
27	Power switch	DZ47-63, C32	
28	electronic governor	SS, 8A	
29	fan	YY5612	60W
30	fan bolt	M8×30	
31	feet frame		
32	hex to unscrew	M10×20	
33	universal caster wheel	75×21	
34	Adjusting bolt	M8×80	hex
35	Driven shaft		
36	Bearing2	6804Z	
37	conveying driven sprocket		
38	flat gasket		
39	card reed	φ20	
40	Frame		
41	transmission motor	80YYJR25-3	1:30
42	Motor bolts	M8×30	hex
43	transmission chain	06B-37 section	
44	drive sprockets	R7.5	
45	Sprocket bolts	M5×12	hex
46	Heat insulation piece		
47	stents		



Jet shrinker decomposition graph Inets typel E-TUN-4525H

E-TUN-4525H Regular jet heat shrinkable packer (nets type) fittings directory

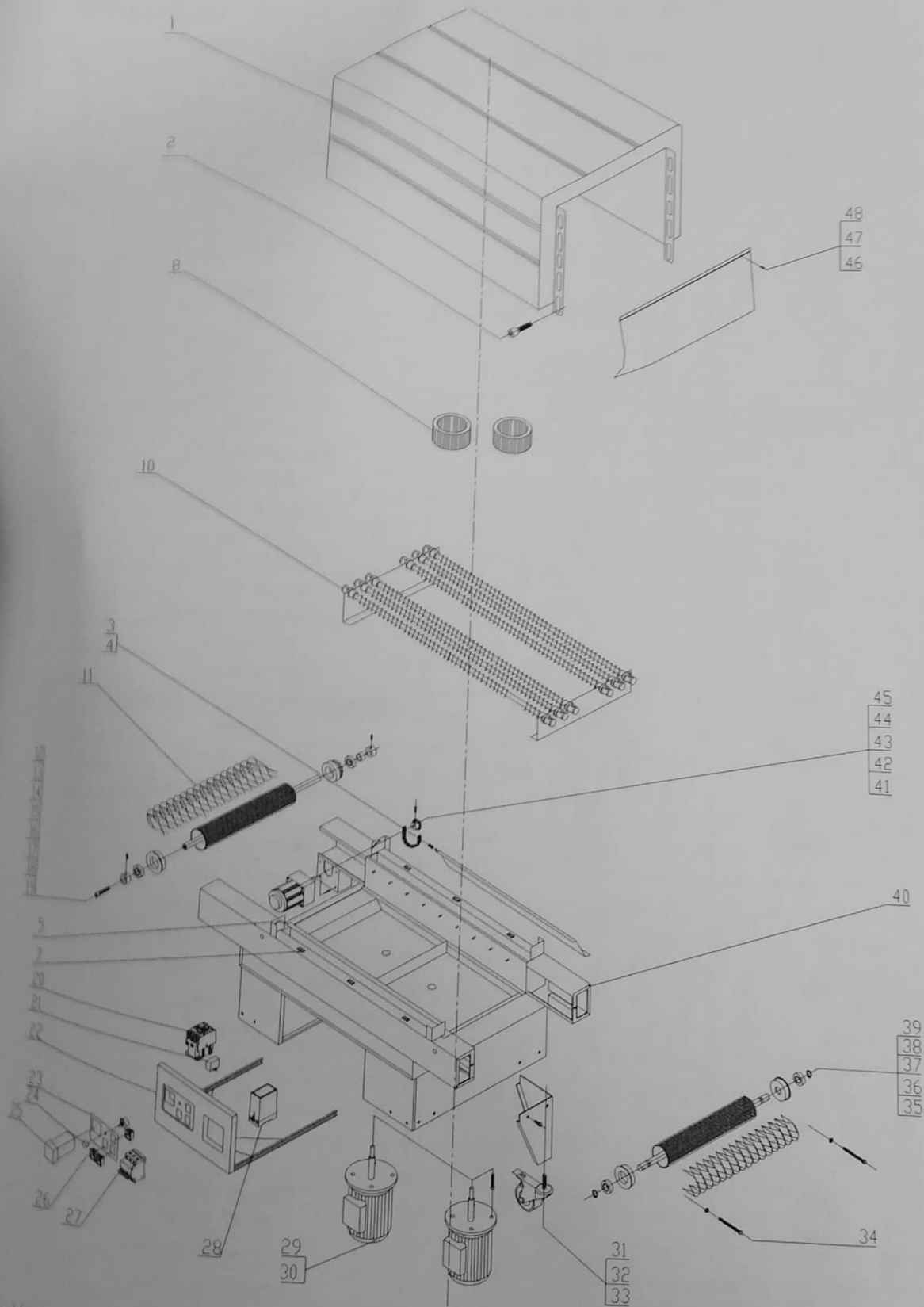
NO	Name	Spedificanon/Model	Remark
1	furnace word		
2	lift adjustment bolts	6 x 16	
3	the wind baffle lock nut	M4	
4	the wind dampers		half silk
5	the wind baffle regulating sit		
6			
7	hinge		
8	wind leaf	R67.5 H = 67	
9			
10	heating tube	1.2 kw x 755mm	
11	mesh belt		
12	ZhuDongZhou bolt	M10x15	
13	positioning sets	R10xR15	
14	positioning bolt	M6x8	headless
15	Bearing	6004RS	
16	active roller set	R35	
17	active roller	R35x420	
18	ZhuDongZhou	R10x600	
19	sprocket	R35	
20	AC contactor	CJX2-1810	220V
21	capacitance	5uF	
22	control panel frame		220V
23	scutcheon		
24	Potentiometer	WH118-1, 2W	22K
25	intelligent temperature controller	XMTG-2000	
26	switch	321B/N82, 16A	220VAC
27	Power switch	DZ47-63, C32	
28	electronic governor	SS, 8A	
29	fan	YY5612	60W
30	hex to unscrew	M8x30	
31	feet frame		
32	hex to unscrew	M10x20	
33	universal caster wheel	75x21	
34	Adjusting bolt	M8x80	hex
35	card reed	R9	
36	Bearing	6004RS	
37	roller set	R35	
38	driven shaft	R35x480	
39	roller	70x450	
40	Frame		
41	transmission motor	80YYJR25-3	1:30
42	Motor bolts	M8x30	hex
43	transmission chain	06B-37 section	
44	drive sprockets	R7.5	
45	Sprocket bolts	M5x12	hex
46	Heat insulation piece		



Lengthened jet shrink Packing Machine Breakdown Diagram (Chain type) E-TUN-4535H

E-TUN-4535H Spare parts list for lengthened jet shrink packing machine

NO	Name	Spedificanon/Model	Remark
1			
2			
3			
4			
5			
6	Wind leaf	R67.5 H=67	
7			
8	Heating light tube with coolant	1.6kW×1055mm	220VAC
9	Driving Chain	08B-252	
10			
11	Driving roller	R8.5×393	
12	Bearing cover		
13	Driving shaft		
14	Driving Chain		
15	Fixing cover		
16	Bearing coner1	6004Z	
17	Bearing cover		
18	Driving Chain		
19			
20	AC contactor	CJX2-2510	220V
21			
22			
23	Brand		
24	Potentiometer	WH118-1, 2W	4K7
25	Intelligent temperature	XMTG-2000	
26	Mesh holding device	321B/N82, 16A	220VAC
27	Power switch	DZ47-63, C32	
28	AC electronic speed regulator	SS, 8A	
29	Fan motor	YY5612	60W
30			
31			
32			
33	Truckle	75×21	
34	Adjusting bolt	M8×80	
35	Driven shaft		
36	Bearing2	6804Z	
37	Convey driving chain wheel		
38	Flat washer		
39	Bale spring	φ 20	
40	Frame		
41	Driving motor	90YYJR90-3	1:25
42			
43	Driving Chain	06B-37	
44	Driving chain wheel	R7.5	
45			
46			



lengthened jet shrinker decomposition graph (nets type) E-TUN-4535H

E-TUN-4535H Regular jet heat shrinkable packer (nets type) fittings directory

NO	Name	Spedificanon/Model	Remark
1	furnace word		
2	lift adjustment bolts	6 x 16	
3	the wind baffle lock nut	M4	
4	the wind dampers		half silk
5	the wind baffle regulating sit		
6			
7	hinge		
8	wind leaf	R67.5 H = 67	
9			
10	heating tube	1.2 kw x 755mm	
11	mesh belt		
12	ZhuDongZhou bolt	M10x15	
13	positioning sets	R10xR15	
14	positioning bolt	M6x8	headless
15	Bearing	6004RS	
16	active roller set	R35	
17	active roller	R35x420	
18	ZhuDongZhou	R10x600	
19	sprocket	R35	
20	AC contactor	CJX2-1810	220V
21	capacitance	5uF	
22	control panel frame		220V
23	scutcheon		
24	Potentiometer	WH118-1, 2W	22K
25	intelligent temperature controller	XMTG-2000	
26	switch	321B/N82, 16A	220VAC
27	Power switch	DZ47-63, C32	
28	electronic governor	SS, 8A	
29	fan	YY5612	60W
30	hex to unscrew	M8x30	
31	feet frame		
32	hex to unscrew	M10x20	
33	universal caster wheel	75x21	
34	Adjusting bolt	M8x80	hex
35	card reed	R9	
36	Bearing	6004RS	
37	roller set	R35	
38	driven shaft	R35x480	
39	roller	70x450	
40	Frame		
41	transmission motor	80YYJR25-3	1:30
42	Motor bolts	M8x30	hex
43	transmission chain	06B-37 section	
44	drive sprockets	R7.5	
45	Sprocket bolts	M5x12	hex
46	Heat insulation piece		