



## OPERATOR'S MANUAL

FOR ALL MMS SERIES MANUAL IMPULSE SEALERS (V07/16)



 **WARNING**

Failure to read and follow the Operator's Manual and all operating instructions can result in death, bodily injury and/or property damage. Save this manual for future reference.

## TABLE OF CONTENTS

1. Introduction	2	5.6 Change the Knife Cutter	4
2. General Safety Warnings	2	5.7 Replace the Seal Timer Circuit Board	4
3. Features	2	5.8 Replace the Standard Flat Seal Element with an Optional Round Wire Element	4
4. Operation	3	6. Machine Parts, Tables, and Drawings	5
4.1 Installing your Sealer	3	6.1 Table 1 – Seal Timer Boards	5
4.2 How to Adjust the Seal Timer	3	6.2 Fig. 1 – Schematic Diagram	5
4.3 Sealing the Bag	3	6.3 Fig. 2 – Parts Breakdown	5
5. Maintenance	3	6.4 Fig. 3 – Parts Breakdown	5
5.1 Safety Warnings	3	6.5 Fig. 4 – Parts Breakdown	5
5.2 General Maintenance	3	6.6 Table 2 – Parts Description	5
5.3 Replace the Seal Element	3	7. Troubleshooting	6
5.3 Replace the PTFE Sheet	4	8. Notes	6
5.5 Replace the Silicone Bar	4		

## 1

## INTRODUCTION

Congratulations and thank you for purchasing a JORESTECH® impulse sealing machine. These small yet powerful machines are used to seal heat sealable bags used for a wide variety of applications.

Your JORESTECH® impulse sealer is equipped with an adjustable sealing timer which controls the length of the seal cycle. This will enable you to seal bags uniformly and with great ease. Simply adjust the seal timer to the minimum amount of time necessary to seal your bag, place the bag over the seal area, and lower the seal bar until the indicator light goes off.

## 2

## GENERAL SAFETY WARNINGS



### WARNING

For your safety, and to assure the correct use of your sealer, please read and follow all instructions and warnings stated in this manual. Save these instructions for future reference.

- Do not seal flammable or explosive products.
- Keep objects and body parts away from heated areas. Touching them may cause severe burns or fire.
- If your unit is equipped with a cutting trimmer do not touch the cutting knife as doing so may cause cuts and/or lacerations.
- Always unplug the machine from the electrical outlet before servicing the unit.
- Use and store your sealer indoors in a clean and dry environment. Never expose to water, damp conditions or direct sunlight.
- Leaving residue on the seal area will shorten the life of the heating elements, PTFE, and the silicone rubber bar. Keep your unit clean and free of residues by cleaning with a lint-free dry cloth.
- Heat elements will break during normal machine use. Replace with a new heat element when this happens.
- Replace worn or damaged PTFE strips immediately to avoid damaging the machine. Failure to replace a damaged strip may create a short and cause extensive damage to the unit.
- A worn or damaged silicone bar will negatively affect the quality of the seal. Replace the silicone bar when necessary.
- Use only original JORESTECH® replacement parts.

## 3

## FEATURES

- Seals most heat sealable bags
- LED sealing power indicator
- Adjustable timer for optimal seal control
- Bag excess trimming system (available in some models)
- No warm-up time necessary
- Die-Cast construction / Aluminum body on selected models
- Fuse protected (available in some models)

## 4.1 INSTALLING YOUR SEALER

- Place the unit on a dry, stable, and flat surface.
- Plug the machine into a proper dedicated power circuit, **making sure the voltage is compatible with your unit.**
- For sealers equipped with a cutter, carefully remove the wax coating from the cutting blade before use.

## 4.2 HOW TO ADJUST THE SEAL TIMER

The correct seal time will depend on the thickness and seal characteristics of the bag, and needs to be adjusted accordingly. **This process is simple yet critical for good machine operation:**

The Seal Timer is located on the front of the control panel. To find the right setting to seal your bag, test by setting the timer to its lowest setting and performing the bag sealing process mentioned above. If the seal is inadequate, increase the seal time by half a point and test again. Repeat this process until the desired seal is achieved. The length of time needed should be the minimum seal time necessary to seal your bags. Using an excessive seal time may damage the bag, compromise the seal, and shorten the life of machine and its components.

## 4.3 SEALING THE BAG

- The bag must be heat-sealable and fit flat within the length of the seal area.
- Place and center the open side of the bag flat over the sealing surface. Make sure bag is smooth and clean, with no wrinkles, creases or bends.
- **Carefully lower the seal bar and hold down firmly**  
The machine will start operating as soon as the seal bar is lowered. The LED on the control panel will illuminate briefly while the seal element is energized. Power is consumed while the LED is lit. The seal cycle ends once the seal time is reached. The seal area will remain hot after the seal cycle has ended, so use caution when handling the unit. See below for instructions on adjusting the seal timer.
- For one to two seconds continue to apply downward pressure onto the seal bar to allow for the bag to regain its strength.
- For models with cutter, slide the knife back and forth once to cut the width of the bag.
- Raise the seal bar and retrieve the bag to check the seal.

When reading this section refer to section 6 (Parts, Tables and Drawings). Part numbers will be in a circle.

## 5.1 SAFETY WARNINGS

**WARNING**

Always allow the machine to cool down and disconnect the sealer from its power source before cleaning, fixing, maintaining, or servicing the unit or when not in use. Unplugging the sealer will prevent the risk of severe burns, electrocution and serious personal injury.

**WARNING**

Do not attempt to modify this product or create accessories not recommended for use with this product. Any such alteration or modification is misuse and could result in hazardous conditions leading to possible serious personal injury.

**WARNING**

When servicing use only JORESTECH® replacement parts. Use of any other parts can create a hazard or cause product damage.

**WARNING**

To reduce the risk of injury or damage, avoid contact with any hot surface.

## 5.2 GENERAL MAINTENANCE

- Using a clean dry lint-free cloth keep the areas in contact with the bag clear of debris and buildup.
- Check that machine components and seal areas are not worn or damaged.
- The PTFE sheets, heating elements, silicone bars, and cutting knives (only in models that include cutting systems) will need to be replaced regularly.
- Change these parts often to maintain an optimal machine operation.

## 5.3 TO REPLACE THE SEAL ELEMENT

- Raise the Handle Arm (2)
- Unscrew the two metal plates (9)
- Remove the top PTFE sheet.
- Disconnect/unscrew both ends of the heating element from their terminal connections (7)
- Place the new heating element in its place and connect/screw both terminal connections. The new element must be completely flat, if its bent or kinked do not install and discard.
- Place a PTFE sheet on top of the new element, evenly, making sure it lays completely flat, without creases, bends or wrinkles. The replacement PTFE sheets should cover the element end to end, leaving the terminals exposed.
- Replace and screw the two metal plates, which hold the PTFE sheet firmly in place.



**5.4 TO REPLACE THE PTFE SHEETS**

- Raise the Handle Arm (2)
- Unscrew the two metal plates (9)
- Remove and discard the top PTFE sheet.
- Disconnect/unscrew both ends of the heating element from their terminal connections (17)
- Remove and discard the bottom PTFE sheet.
- Place a new bottom PTFE sheet on top of the sealer body, evenly, making sure it lays completely flat, without creases, bends or wrinkles. The replacement bottom PTFE sheet should cover the sealing area end to end.
- Place the new heating element in its place and connect/screw both terminal connections. The new element must be completely flat, if its bent or kinked do not install and discard.
- Place the top PTFE sheet on top of the new element, evenly, making sure it lays completely flat, without creases, bends or wrinkles. The replacement PTFE sheets should cover the element end to end, leaving the terminals exposed.
- Replace and screw the two metal plates, which should hold the PTFE sheet firmly in place.

**5.5 TO REPLACE THE SILICONE BAR**

- Raise the Handle Arm (2)
- Pull off the old silicone rubber (5)
- Carefully tuck in the new silicone rubber, by placing one side into the channel and slowly easing the other side in, avoiding damaging the surface of the rubber. Make sure it lays completely flat, without creases, bends or wrinkles.

**5.6 TO CHANGE THE KNIFE CUTTER (CUTTING BLADE)**

- Slide the T-Bar holder (27) to the opening at the end of the handle arm (2) to remove the T-bar holder assembly.
- With a small screw driver remove the hold down clip and remove the old blade.
- Carefully locate new blade (26) in place and replace hold down clip.
- Insert T-Bar assembly into opening at the end of handle arm and slide back into place.
- Carefully remove the wax coating from the cutting blade before use.

**5.7 TO REPLACE THE SEAL TIMER CIRCUIT BOARD (15)**

- Remove the screws that hold the seal timer in place. These screws are located on the front of the seal timer.
- Gently and evenly pull the seal timer away from the sealer frame until the cable harness is visible.

- Carefully disconnect the Four Pin Plug (18) to remove old seal timer.
- Plug in the new seal timer to the four pin plug.
- Gently and evenly push the new seal timer back into place.
- Install the hold down screws to secure the new timer.
- Refer to Section 4.2 **How to Adjust the Seal Timer** to readjust seal settings.

**5.8 TO REPLACE THE STANDARD FLAT SEAL ELEMENT WITH AN OPTIONAL ROUND WIRE ELEMENT (ONLY AVAILABLE FOR SOME MODELS)**

An optional round wire kit (round wire + special PTFEs) may be available to seal-and-cut films for specific applications. Please contact you JORESTECH® supplier for availability.

- Raise the Handle Arm (2)
- Unscrew the two metal plates (9)
- Remove and discard the top PTFE sheet.
- Disconnect/unscrew both ends of the heating element from their terminal connections (17)
- Remove and discard the bottom PTFE sheet.
- Place the wider PTFE sheet on top of the sealer body, evenly, making sure it lays completely flat, without creases, bends or wrinkles. The replacement bottom PTFE sheet should cover the sealing area end to end.
- Place the new round wire heating element in its place and connect/screw both terminal connections. The new element must not be kinked. Otherwise do not install and discard.
- Replace and screw the two metal plates.
- Clean the silicone bar (5) with alcohol so that it is completely free of debris, or better yet, replace it with a new silicone rubber.
- Remove the backing of the self-adhesive PTFE sheet, and adhere the PTFE sheet onto the bottom of silicone rubber, making sure it sticks completely flat, without creases, bends or wrinkles. The replacement PTFE sheet must be perfectly centered so that it covers the silicone rubber bar where it makes contact with the new seal element.

Table of Seal Timer Circuit Boards showing board part model and compatible bag sealer model






P-A18-HU	P-C05-HU	P-A38-HU	P-A20-HU	P-A19-HU
				
Works For: E-MMS-100	Works For: E-MMS-200 E-MMS-205 E-MMS-200 (220V)	Works For: E-MMS-300 E-MMS-305 E-MMS-400 E-MMS-405	Works For: E-MMS-200C E-MMS-300C E-MMS-400C E-MMS-500 E-MMS-400	Works For: Discontinued Model (DM) E-MMS-200C (DM) E-MMS-300C (DM) E-MMS-500 (DM) E-MMS-900 (DM)

Table 1

Schematic Diagram

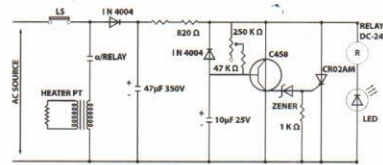


Fig. 1

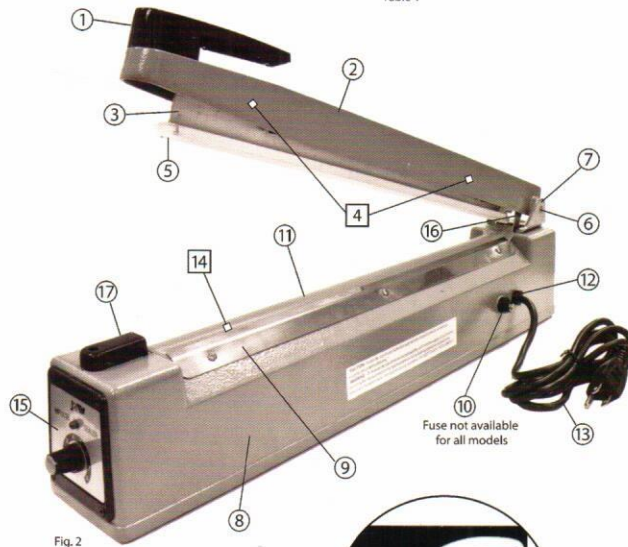


Fig. 2

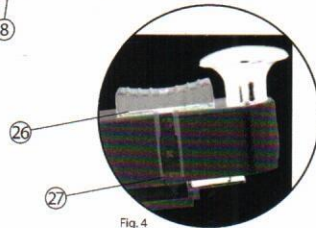
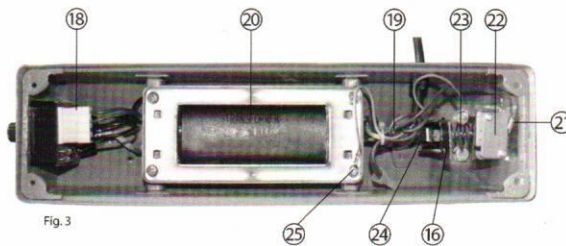
Fig. 4  
For models equipped with cutter

Fig. 3

Legend	
□	Part not visible
○	Part visible

Part Description	
1	Handle Knob
2	Handle Arm
3	Pressure Plate
4	Handle Spring
5	Silicone Rubber
6	Hinge Pin
7	Hinge bracker
8	Body
9	Metal Pate
10	Fuse
11	KIT (6 Heat Elements) (6 PTFE sheets)
12	Strain Relief Bushing
13	Power Supply Cord
14	Heating Element
15	Timer Circuit Board (110v)
16	Switch level
17	Element Bracket
18	4-Pin Plug
19	Internal Wiring
20	Transformer (110v)
21	Wire Terminal
22	Micro Switch for MMS-Series / Foot Pedals
23	Switch Lever Spring
24	Terminal Assembly
25	Ground Wire
26	Knife Cutter
27	T-Bar Holder





## OPERATOR'S MANUAL

FOR ALL MMS SERIES MANUAL IMPULSE SEALERS (V07/16)

To request service, purchase replacement parts,  
Locate an Authorized Service Center and obtain Customer or Technical Support  
contact your machine vendor or visit [www.jorestech.com](http://www.jorestech.com)

Please obtain the date of purchase, machine model and serial number from the product data plate.

PURCHASE DATE \_\_\_\_\_ MODEL NUMBER \_\_\_\_\_ SERIAL NUMBER \_\_\_\_\_